



Concealed Hinges

Group code	Product name
094	Concealed hinge
194	Concealed hinge
096	Concealed hinge
196	Concealed hinge
095	Concealed hinge
195	Concealed hinge
895	Concealed hinge
995	Concealed hinge
295	Concealed hinge
395	Concealed hinge
695	Concealed hinge
795	Concealed hinge
289	Concealed hinge
189	Spring loaded
294	Concealed hinge



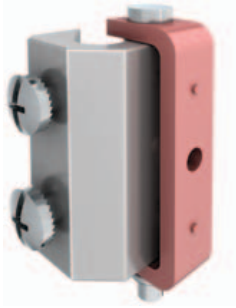
Page

180
181
182
183
184 - 185
186 - 187
188
189
190 - 191
192 - 193
194 - 195
196
197
198
199

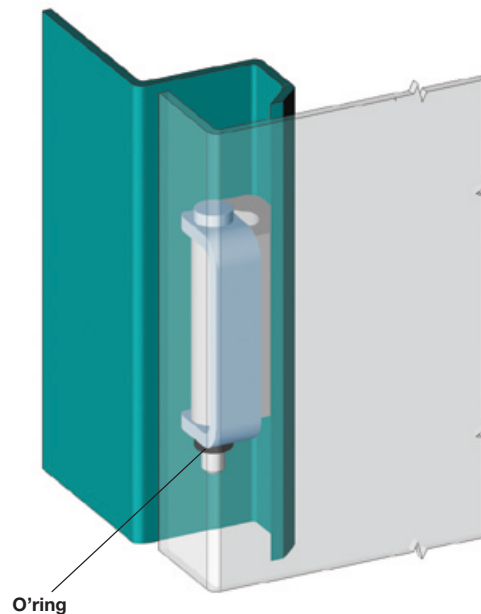
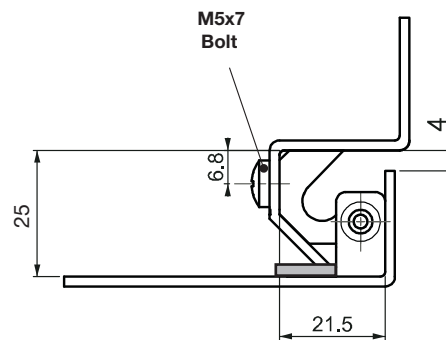
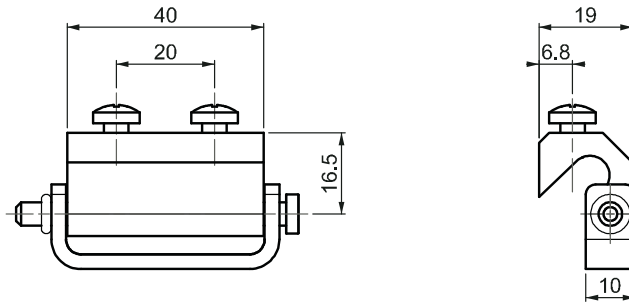


CONCEALED HINGE

094



LH/RH



O'ring

- For 25 mm bended doors . Middle part is copper plated for easy welding

APPLICATIONS

Electric panels, machinery covers.

MATERIAL

BODY : Zamak DIN-EN 1774-ZnAl4Cu1
or Aluminium

Fixed part: : Steel

FINISH

BODY : Zinc plated

FIXED PART : Copper plated

⚠ **Note:** Bolts are given

Hinge Rotation Angle



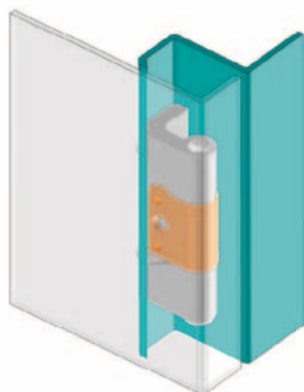
PRODUCT CODE

094	M	-	F
GROUP CODE	MATERIAL		FINISH

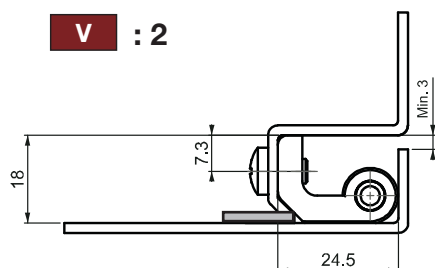
MATERIAL	M	FINISH	F
Zamak	1	Chrome	1
Aluminium	5	Matt anodized	7

194

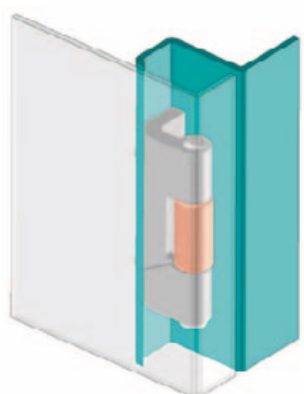
CONCEALED HINGE



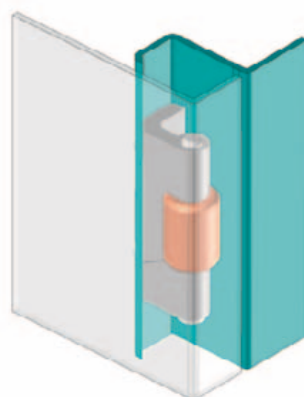
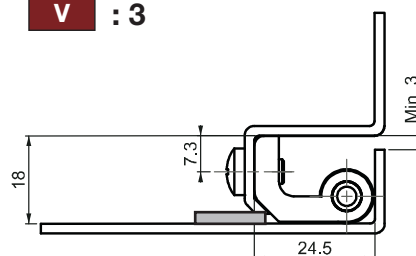
V : 2



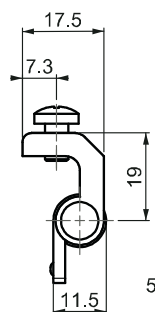
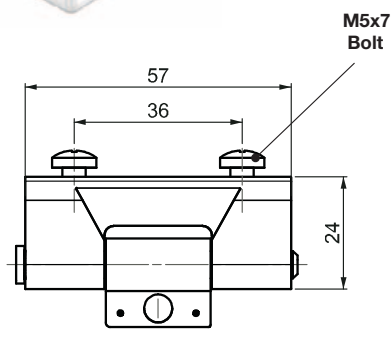
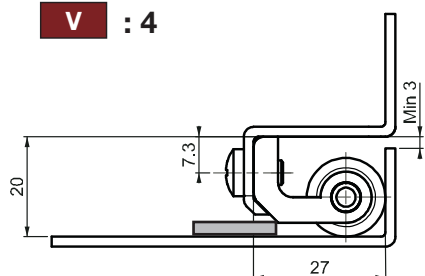
LH/RH



V : 3



V : 4



- For doors with a bend of between 18 mm and 27 mm. Centre part is copper plated for easy welding.
- The centre part is available in different versions.

APPLICATIONS

Electric panels, machinery covers.

MATERIAL

BODY : Zamak DIN-EN 1774-ZnAl4Cu1

WELDING PART : Steel

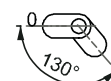
FINISH

BODY : Zinc Plated

WELDING PART : Copper plated

⚠ Note: Bolts are given

Hinge Rotation Angle



PRODUCT CODE

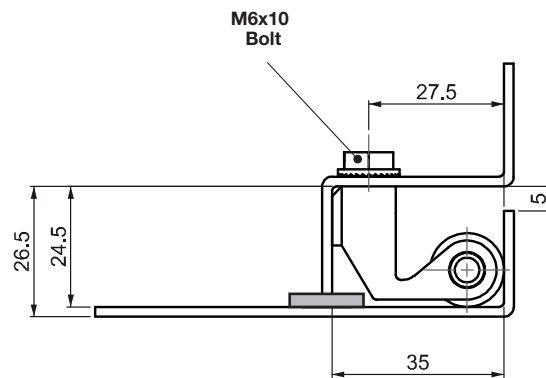
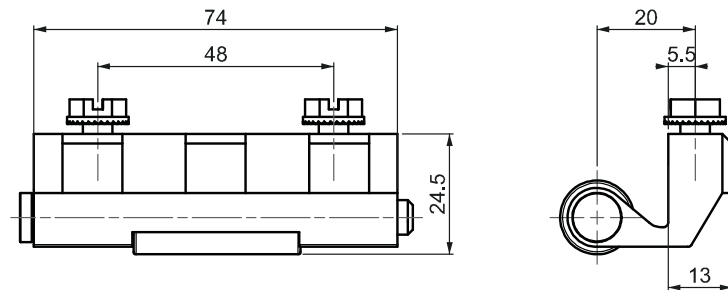
194 - **V**
GROUP CODE VERSION

CONCEALED HINGE

096



LH/RH



- For doors with a 24.5 mm bend. Suitable for both panel and door profile fixing.

APPLICATIONS

Electric panels, machinery covers.

MATERIAL

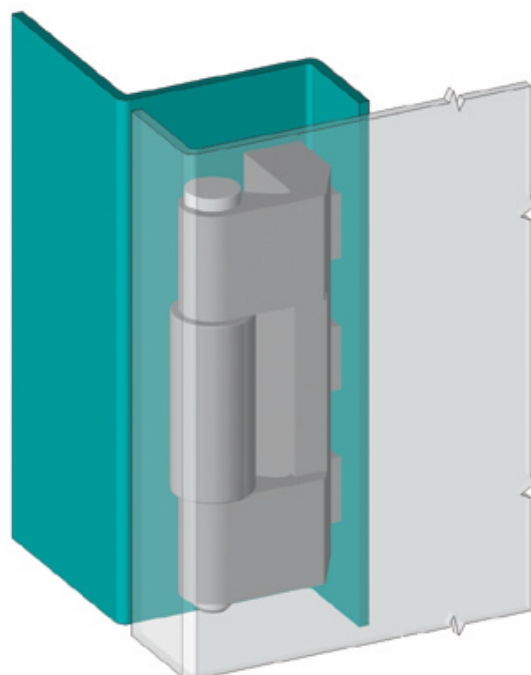
BODY: Zamak DIN-EN 1774-ZnAl4Cu1

WELDING PART : Steel

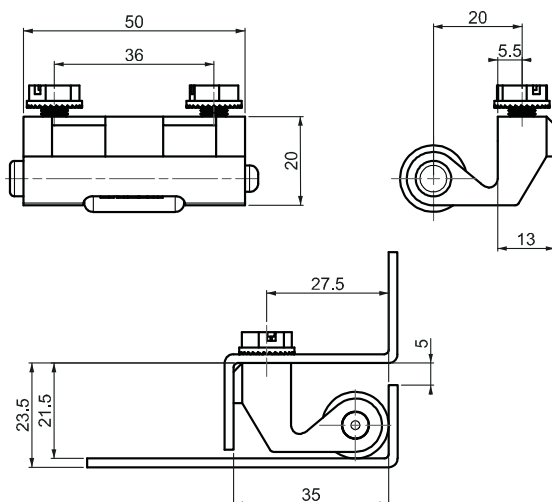
FINISH

BODY : Zinc Plated

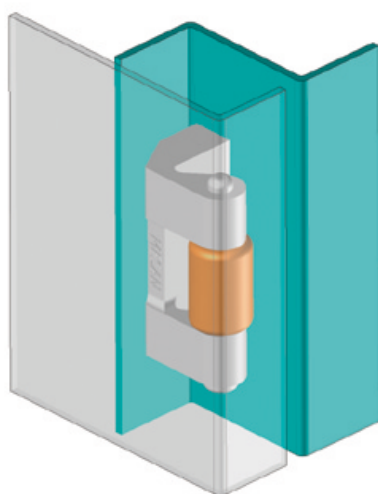
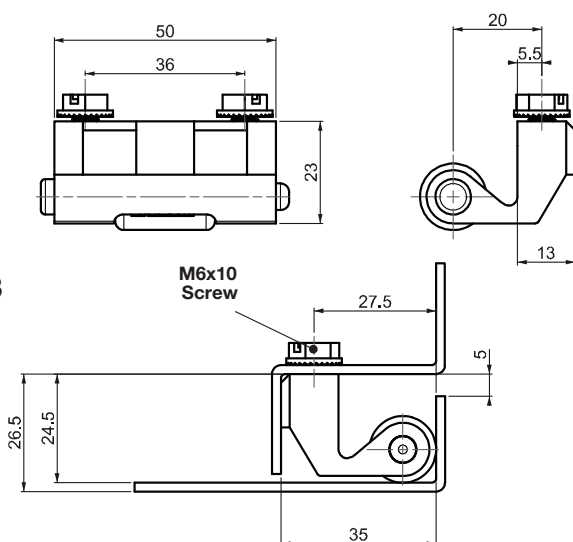
WELDING PART : Copper plated

**Note:** Bolts are given**Hinge Rotation Angle**

V : 20



V : 23



PRODUCT CODE

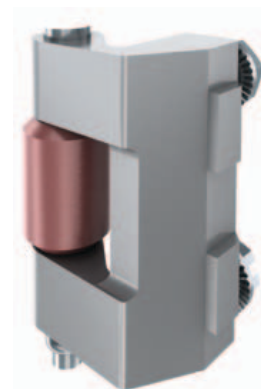
196 - **V**
GROUP CODE VERSION

196

CONCEALED HINGE



LH/RH



- For 21.5 mm to 24.5 mm bended doors. Two different dimensions are available.
- It is alternative for 096 hinge and more competitive.

APPLICATIONS

Electric panels, machinery covers.

MATERIAL

BODY: Zamak DIN-EN 1774-ZnAl4Cu1

WELDING PART : Steel

FINISH

BODY : Zinc Plated

WELDING PART : Copper plated

⚠ Note: Bolts are given

Hinge Rotation Angle



CONCEALED HINGE

095



LH/RH

- For doors with a bend of 22.5 mm or more. Available drilled with two holes or with two mounting studs.
- The centre part is available in different versions.

APPLICATIONS

Electric panels, machinery covers.

MATERIAL

Steel

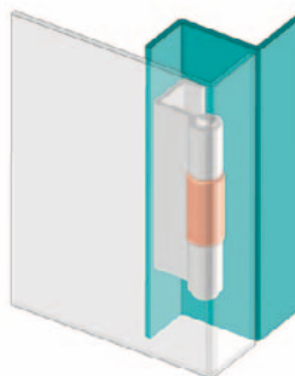
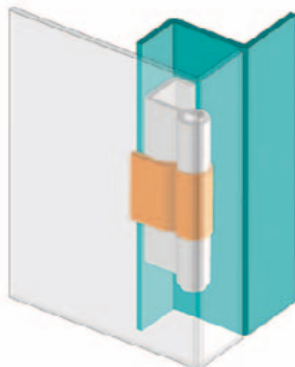
FINISH

BODY: Zinc Plated

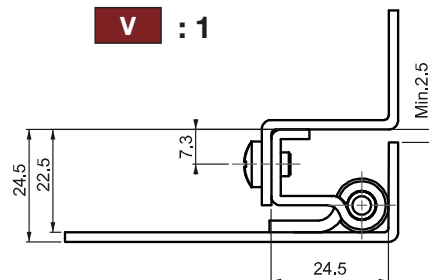
WELDING PART : Copper plated

Note: Bolts are given

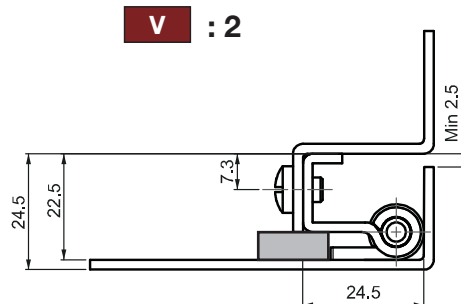
Hinge Rotation Angle



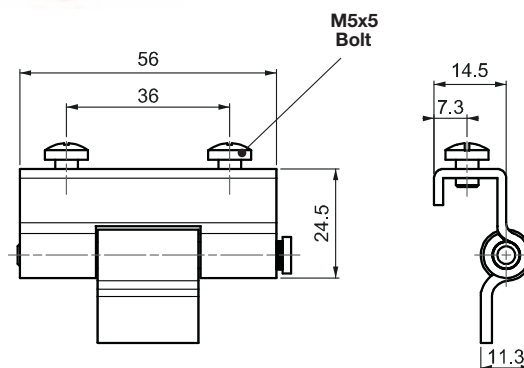
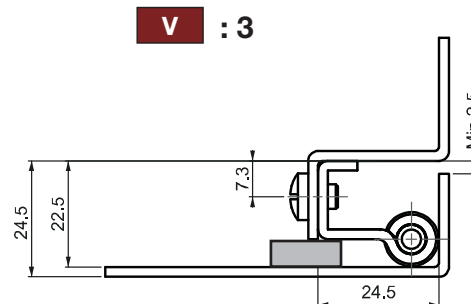
V : 1



V : 2



V : 3

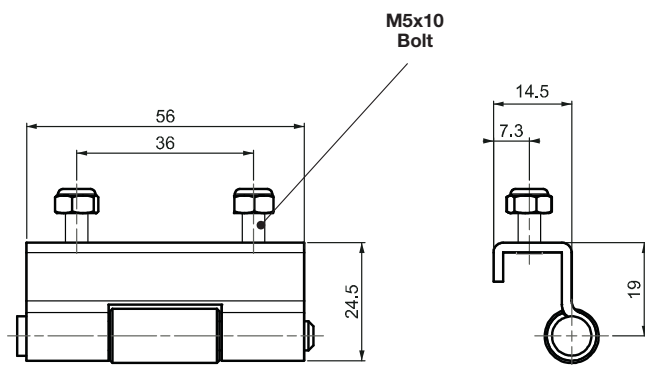


PRODUCT CODE

095	6	3	V	0
GROUP CODE	MATERIAL	FINISH	VERSION	Hole

095

CONCEALED HINGE



LH/RH



- For doors with a bend of 22.5 mm or more. Available drilled with two holes or with two mounting studs.
- The centre part is available in different versions.

APPLICATIONS

Electric panels, machinery covers.

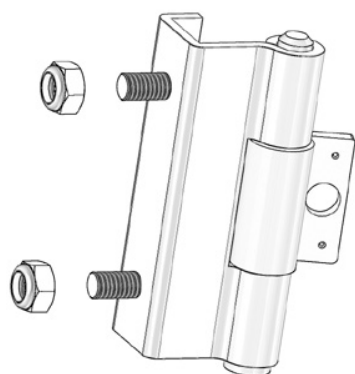
MATERIAL

Steel

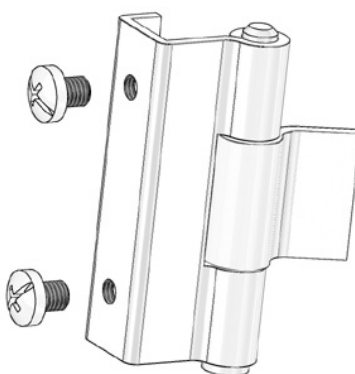
FINISH

BODY: Zinc Plated

WELDING PART : Copper plated



Stud



With Holes

Hinge Rotation Angle



PRODUCT CODE

095	6	-	3	-	V	-	1
GROUP CODE	MATERIAL		FINISH		VERSION		Stud

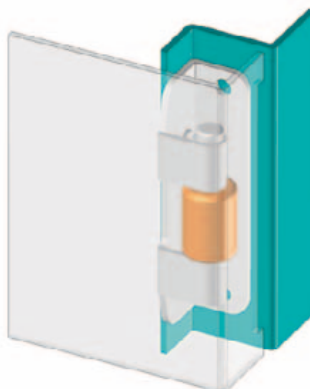
CONCEALED HINGE

195

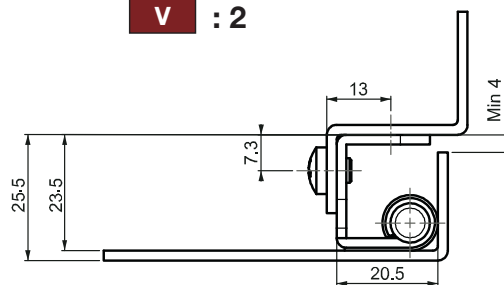
Fixed : 1



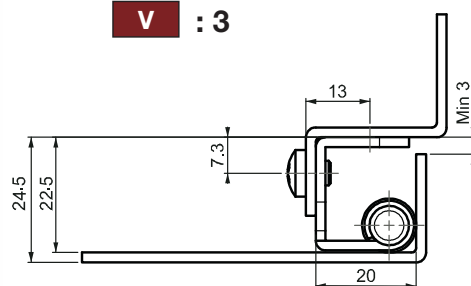
LH/RH



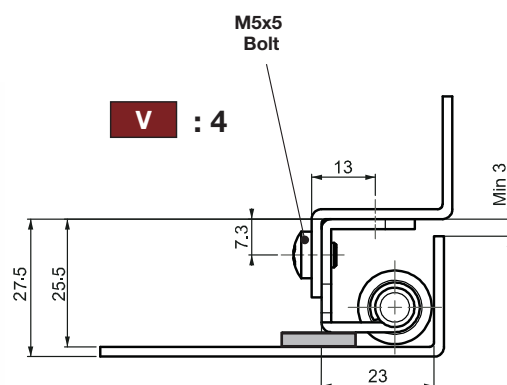
V : 2



V : 3



V : 4



- For doors with a bend of between 23.5mm and 25.5mm.
- Easily fixed to panel or door profile due to hinge design.

APPLICATIONS

Electric panels, machinery covers.

MATERIAL

Steel

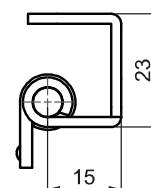
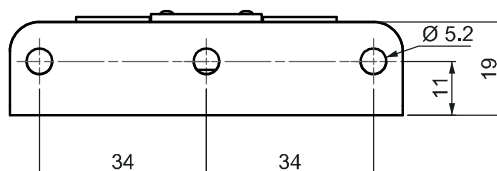
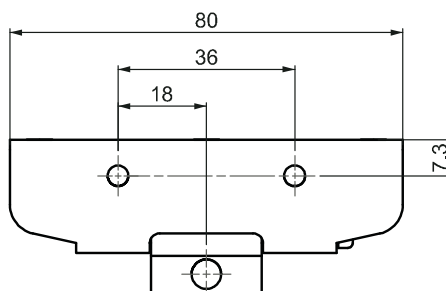
FINISH

BODY: Zinc Plated

WELDING PART : Copper plated

⚠ **Note:** Bolts are given

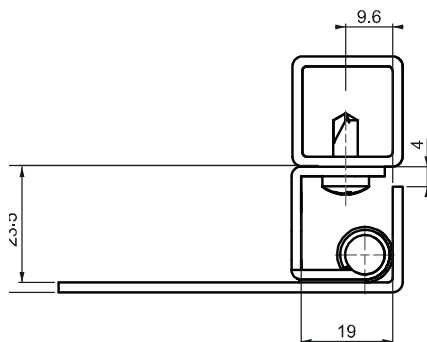
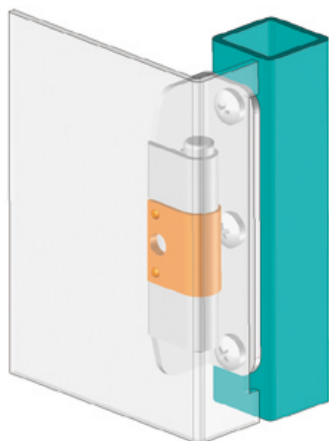
Hinge Rotation Angle



Fixed: 2

195

CONCEALED HINGE



LH/RH



- For doors with a bend of between 23.5mm and 25.5mm.
- Easily fixed to panel or door profile due to hinge design.

APPLICATIONS

Electric panels, machinery covers.

MATERIAL

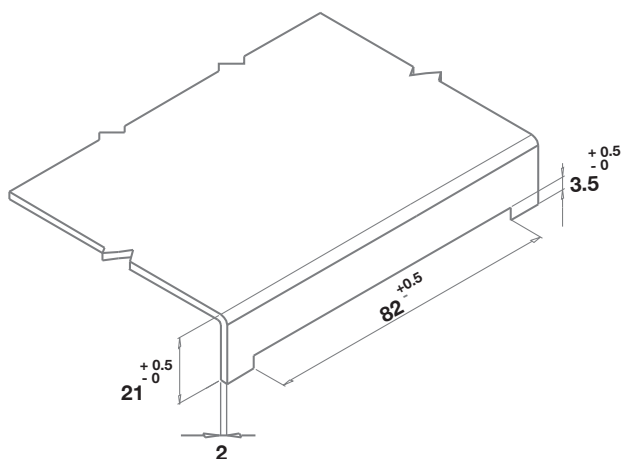
Steel

FINISH

BODY: Zinc Plated

WELDING PART : Copper plated

⚠ Note: Bolts are given



Hinge Rotation Angle



PRODUCT CODE

195 - V
GROUP CODE VERSION

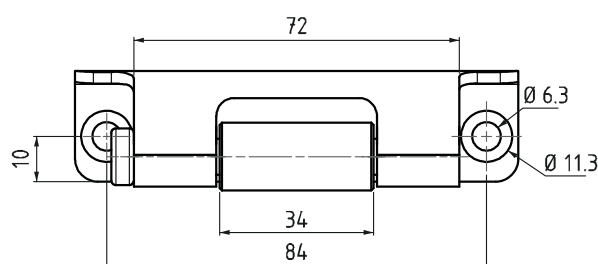
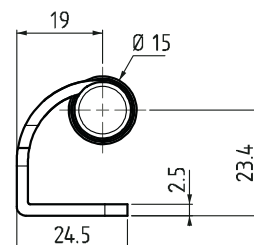
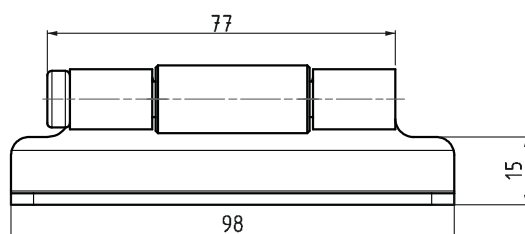
CONCEALED HINGE

895

New



LH/RH



- Side part can be mounted with M 5 screws.
- Centre part is copper plated for easy welding.
- Suitable for heavy duty applications.
- Pin should be mounted during the assembly of the hinge.

APPLICATIONS

Electric panels, machinery covers.

MATERIAL

Steel

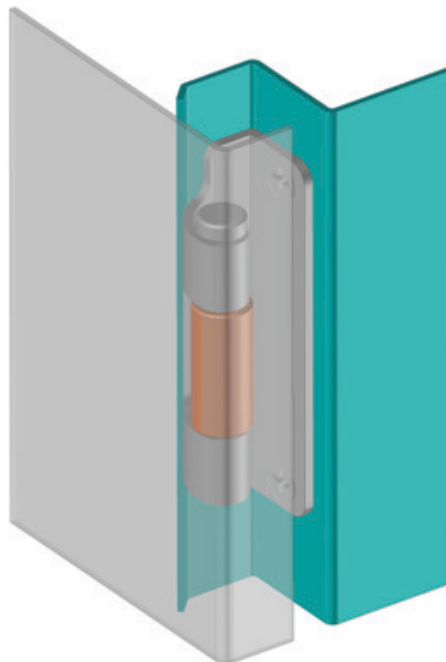
FINISH

BODY: Zinc Plated

WELDING PART : Copper plated

⚠ **Note:** Bolts are not given

Hinge Rotation Angle



PRODUCT CODE

895

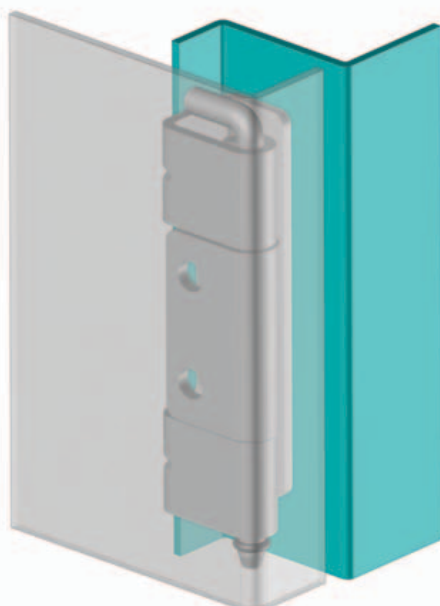
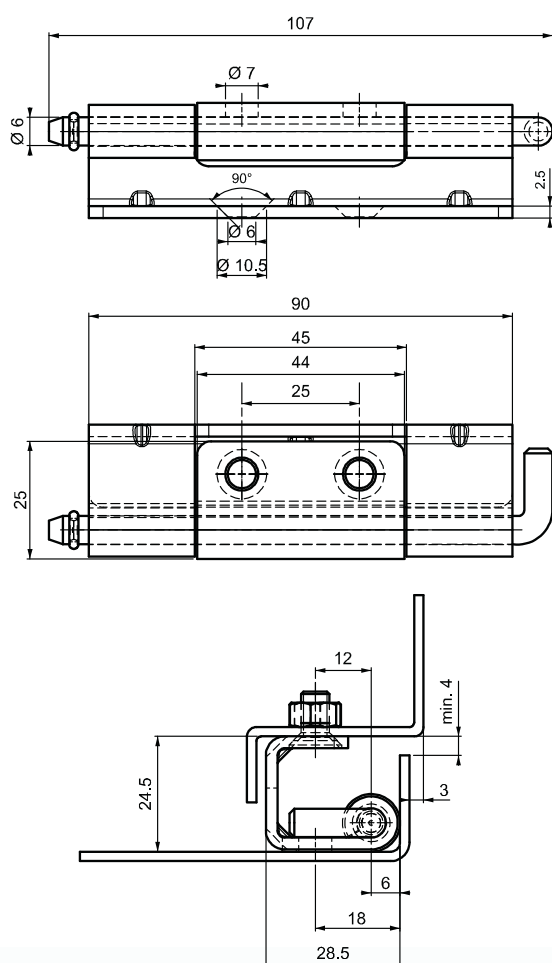
6

3

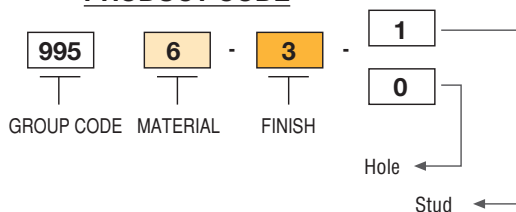
GROUP CODE

MATERIAL

FINISH



PRODUCT CODE



995

CONCEALED HINGE

New



LH/RH



- Side part can be mounted with M 5 screws.
- Centre part is copper plated for easy welding.
- Suitable for heavy duty applications.
- Left and right versions are possible.
- Suitable for 25 mm door bend cabinets.

APPLICATIONS

Electric panels, machinery covers.

MATERIAL

Steel

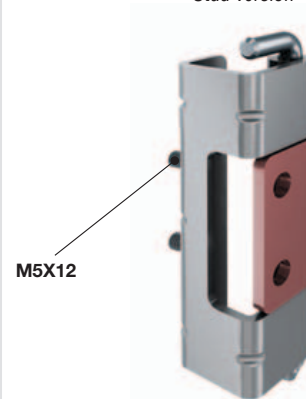
FINISH

BODY: Zinc Plated

WELDING PART : Copper plated

⚠ Note: Bolts are not given

Stud version



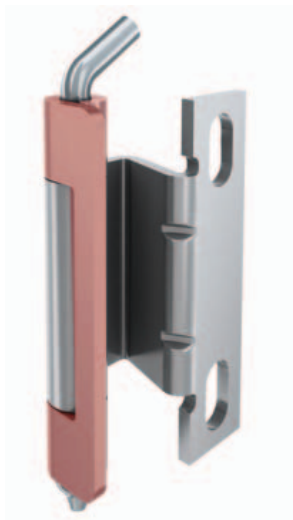
⚠ Note: Nuts are not given

Hinge Rotation Angle



CONCEALED HINGE

295



LH/RH

- For doors with a bend of between 20 mm and 24mm.
- Frame part is screwed -on , door part is welded-on
- LH and RH application is possible

APPLICATIONS

Electric panels, machinery covers.

MATERIAL

Steel

FINISH

BODY: Zinc Plated

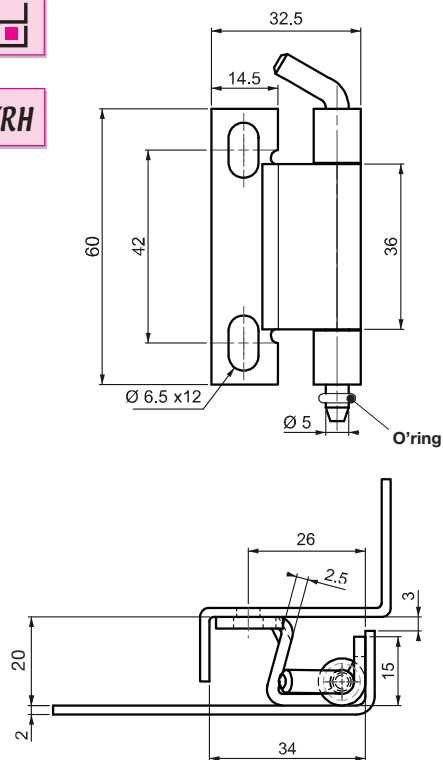
WELDING PART : Copper plated

⚠ Note: Bolts are not given

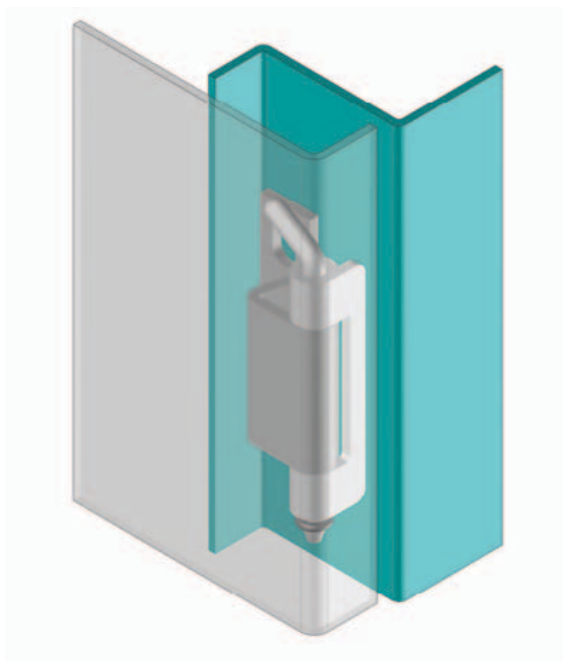
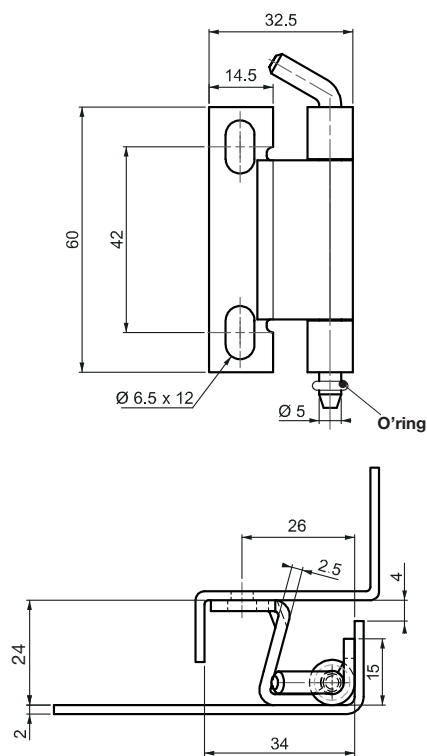
Hinge Rotation Angle



V : 1



V : 2



PRODUCT CODE

295

6

3

V

GROUP CODE

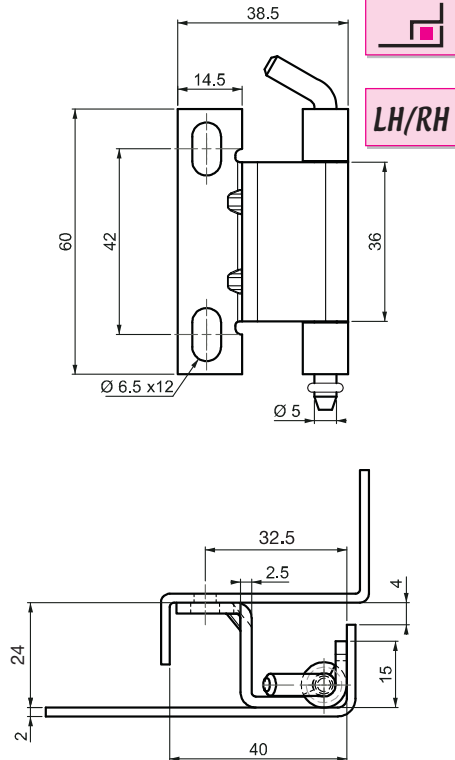
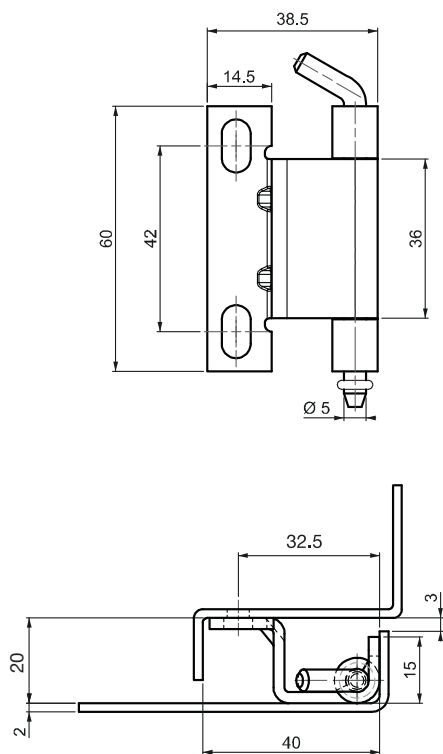
MATERIAL

FINISH

VERSION

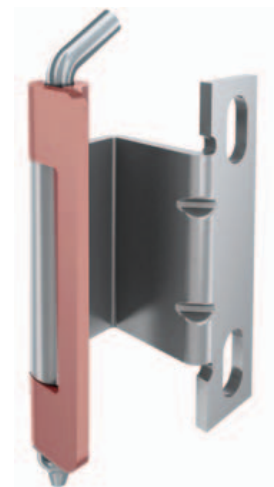
V : 3

V : 4



295

CONCEALED HINGE



APPLICATIONS

Electric panels, machinery covers.

MATERIAL

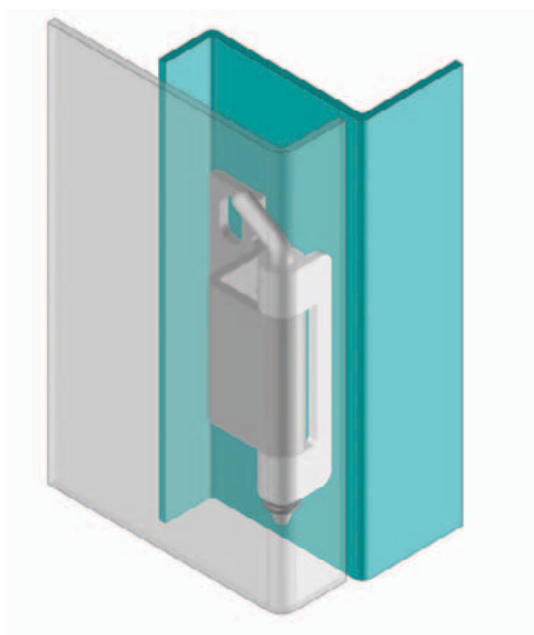
Steel

FINISH

BODY : Zinc Plated

WELDING PART : Copper plated

⚠ Note: Bolts are not given



Hinge Rotation Angle



PRODUCT CODE

295 **6** **3** **V**
 GROUP CODE MATERIAL FINISH VERSION

CONCEALED HINGE

395



LH/RH

- For doors with a bend of between 20 mm and 24mm.
- Frame part is screwed -on , door part is welded-on
- LH and RH application is possible

APPLICATIONS

Electric panels, machinery covers.

MATERIAL

Steel

FINISH

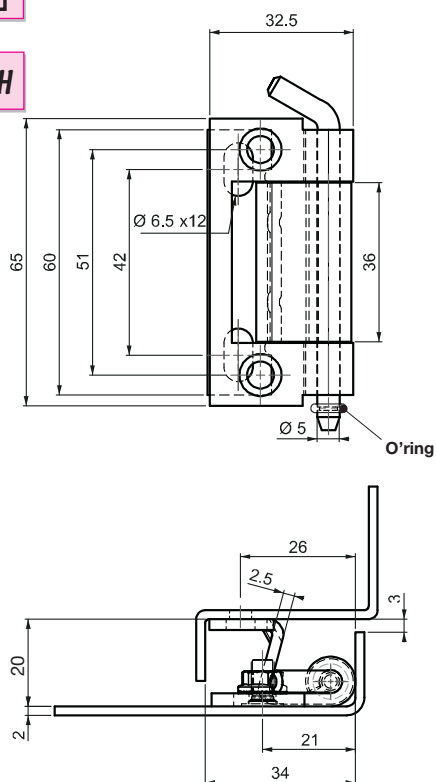
Zinc Plated

⚠ **Note:** Bolts are not given

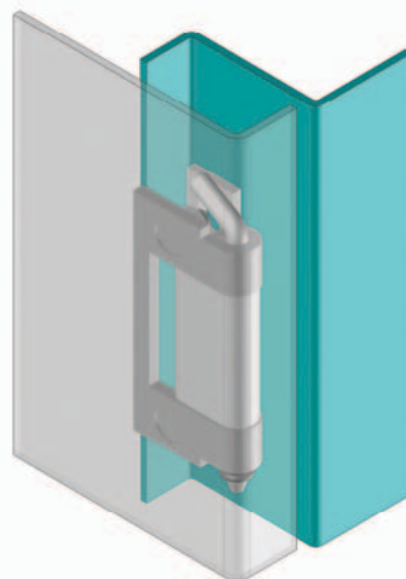
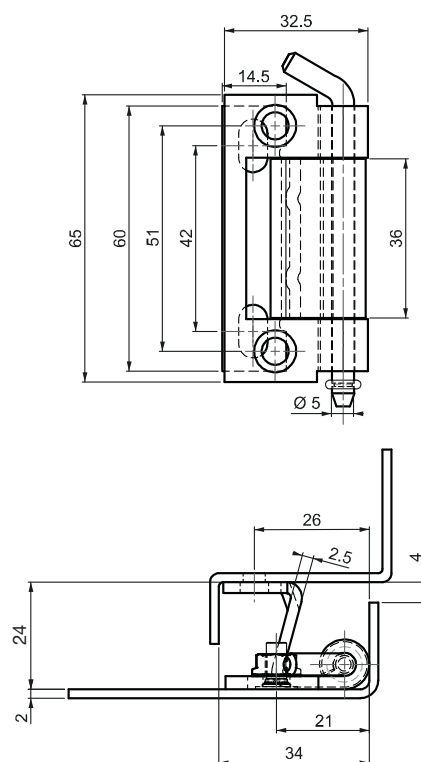
Hinge Rotation Angle



V : 1



V : 2



PRODUCT CODE

395

6

3

V

GROUP CODE

MATERIAL

FINISH

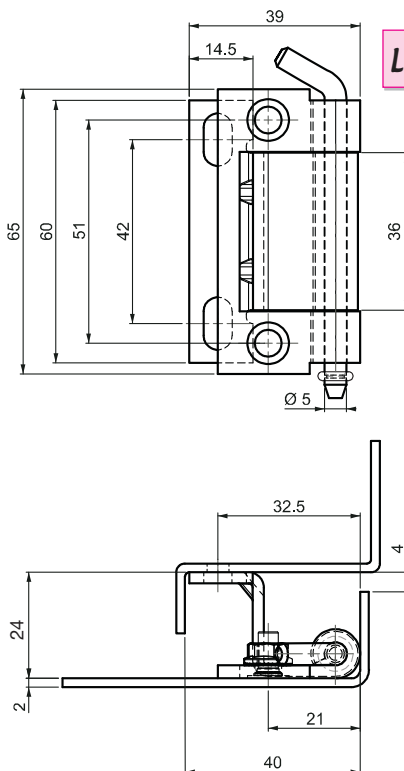
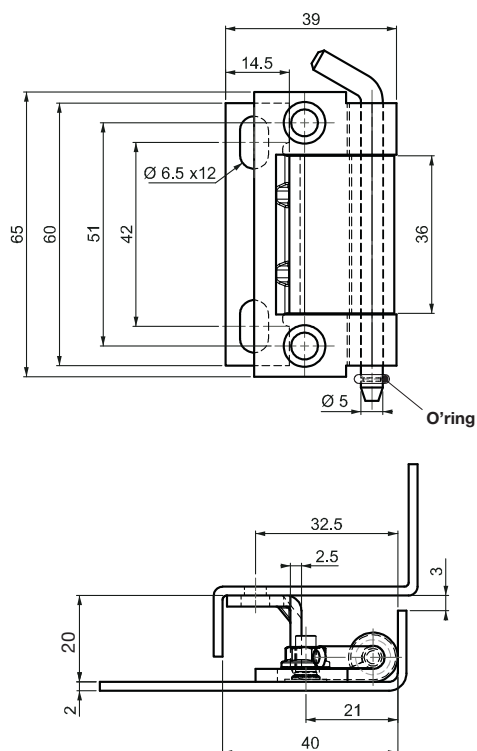
VERSION

395

CONCEALED HINGE

V : 3

V : 4



LH/RH



APPLICATIONS

Electric panels, machinery covers.

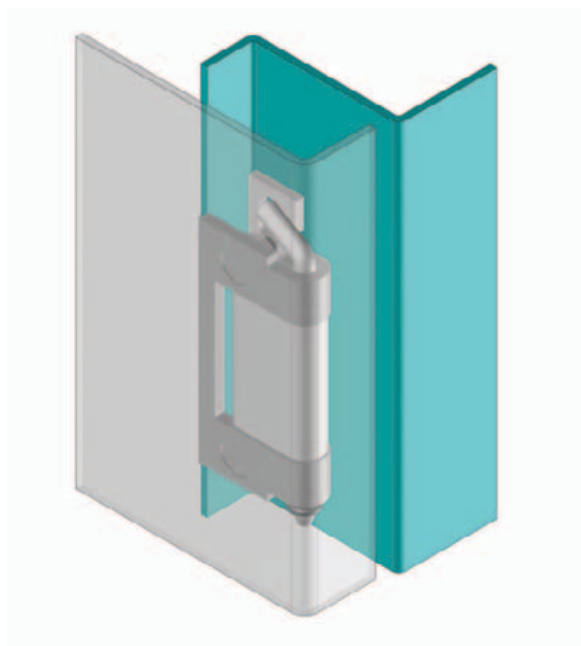
MATERIAL

Steel

FINISH

Zinc Plated

⚠ Note: Bolts are not given



Hinge Rotation Angle



PRODUCT CODE

395

6

3

V

GROUP CODE

MATERIAL

FINISH

VERSION

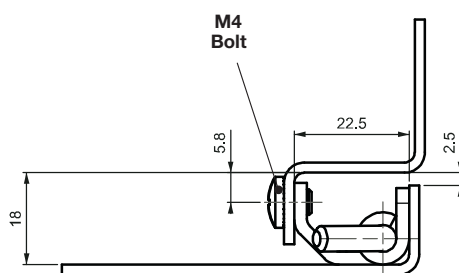
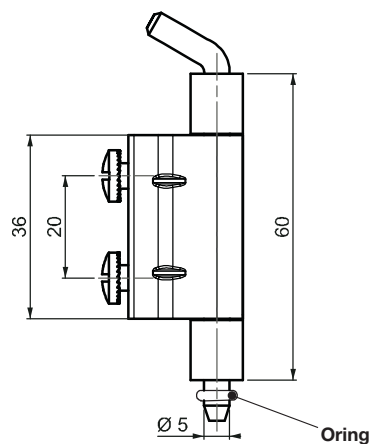
CONCEALED HINGE

695

V : 1



LH/RH



- For doors with a bend of 18 mm
- Frame part is screwed -on , door part is either welded-on or screwed-on
- LH and RH application is possible

APPLICATIONS

Electric panels, machinery covers.


MATERIAL

Steel

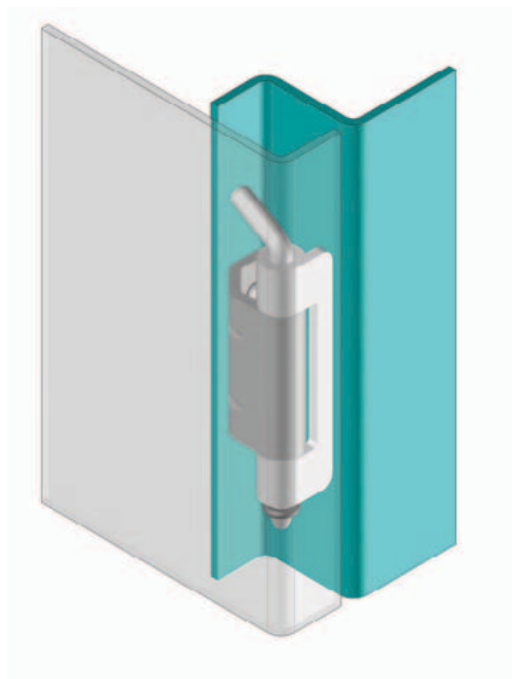
FINISH

BODY : Zinc Plated

WELDING PART : Copper plated

 **Note:** Bolts are given

Hinge Rotation Angle



PRODUCT CODE

695

6

3

1

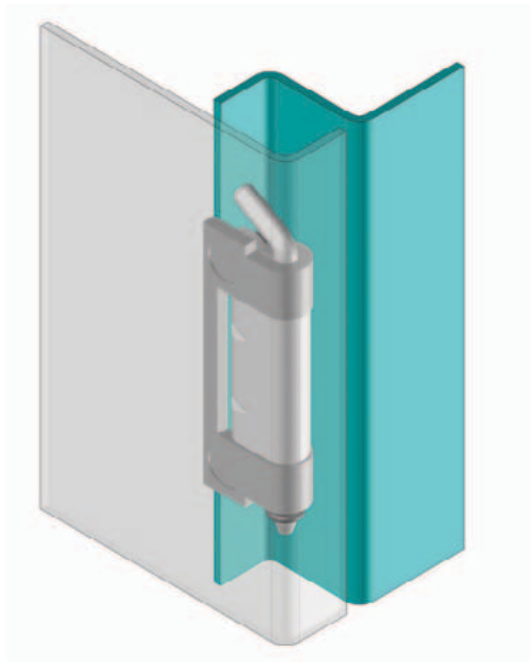
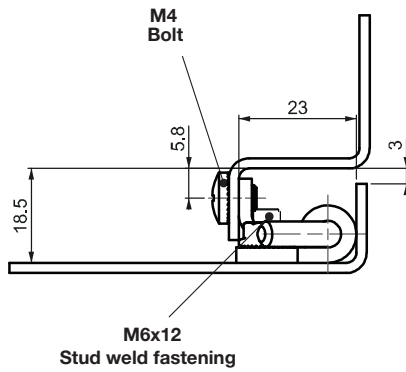
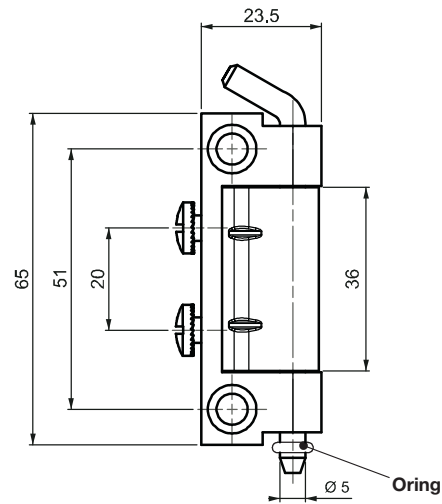
GROUP CODE

MATERIAL

FINISH

VERSION

V : 2



695

CONCEALED HINGE



LH/RH



- For doors with a bend of 18.5 mm
- Frame part is screwed -on ,door part is mounted by nut to welded stud on door.
- LH and RH application is possible

APPLICATIONS

Electric panels, machinery covers.

MATERIAL

Steel

FINISH

Zinc Plated

⚠ Note: Bolts are given

Hinge Rotation Angle



PRODUCT CODE

695	6	-	3	-	2
GROUP CODE	MATERIAL		FINISH		VERSION

CONCEALED HINGE

795



LH/RH

- For doors with a bend of 20 mm to fix profiles
- Frame part is screwed -on ,door part is mounted by nut to welded stud on door.
- LH and RH application is possible

APPLICATIONS

Electric panels, machinery covers.

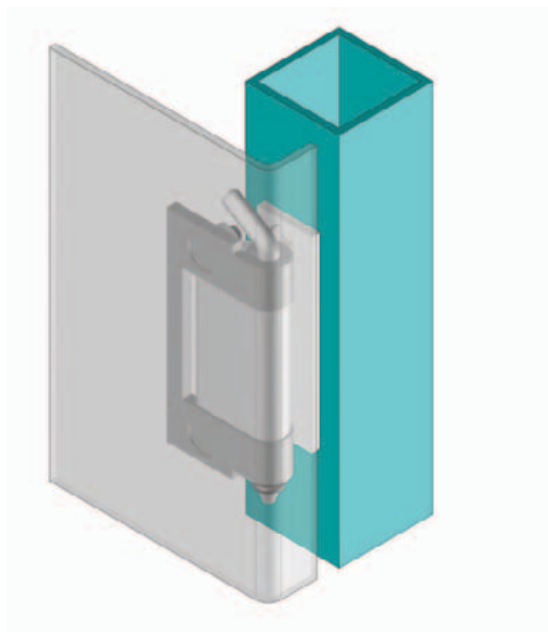
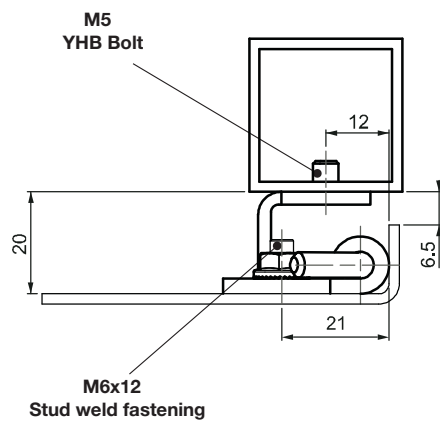
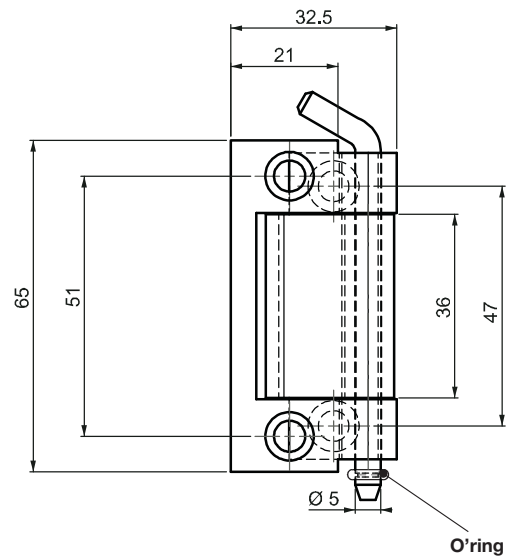
MATERIAL

Steel

FINISH

Zinc Plated

⚠ Note: Bolts are not given

Hinge Rotation Angle**PRODUCT CODE**

795

6

-

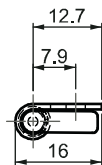
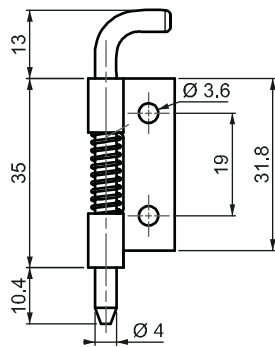
3

GROUP CODE

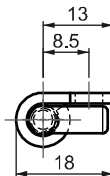
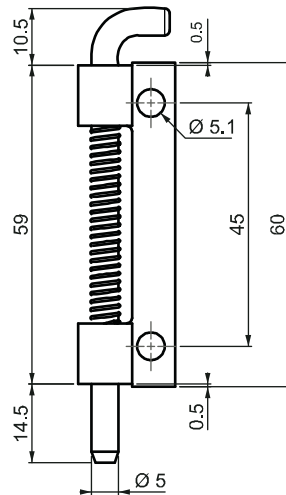
MATERIAL

FINISH

V : 1



V : 2



289

CONCEALED HINGE



R H

L H



- For internally mounted doors. Spring loaded hinge for easy door removal.
- Both versions are either screwed-on or welded-on
- LH and RH application is possible

APPLICATIONS

Electric panels, machinery covers.

MATERIAL

Steel

FINISH

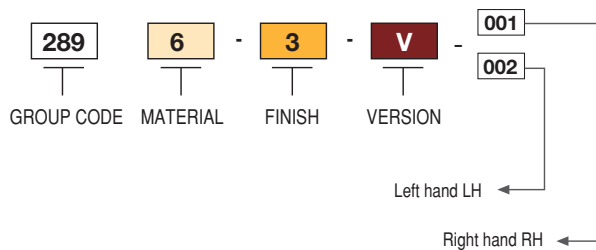
Zinc Plated

Note: Bolts are not given

Assembled RH (as drawn)

Assembled LH (mirror inverted)

PRODUCT CODE

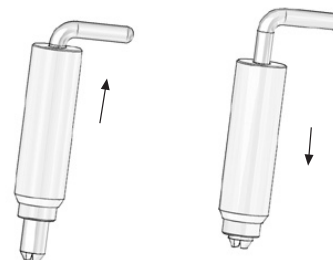
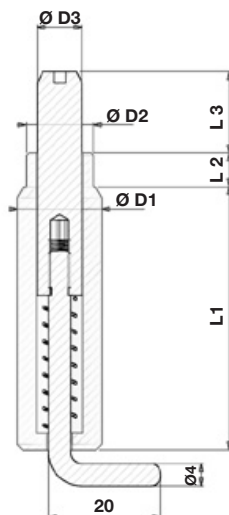


SPRING LOADED

189



LH/RH



- For internally mounted doors. Spring loaded hinge for easy door removal.
- Body is copper plated for easy welding. Available as spring loaded, up and down pair or spring loaded up hinge and fixed bottom hinge.

APPLICATIONS

Electric panels, machinery covers.

MATERIAL

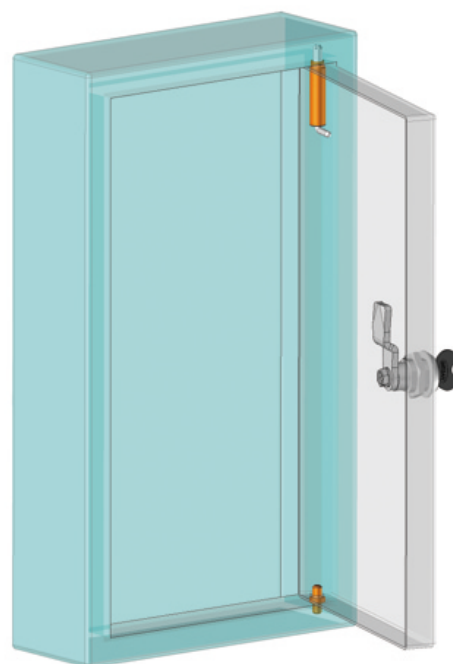
Steel

FINISH

BODY: Copper plated

Other materials : Zinc plated

Hinge Rotation Angle



LOWER SEGMENT

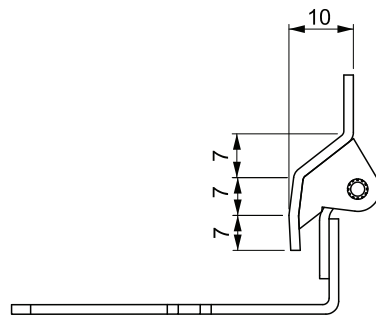
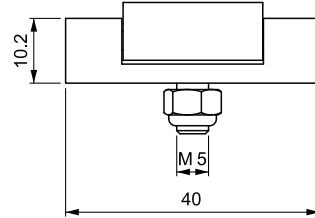
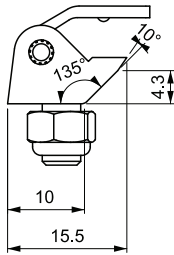
32003192



Ø D1	Ø D2	Ø D3	L 1 mm	L 2 mm	L 3 mm	PRODUCT CODE
10	8.5	6	26.5	3.5	10	189-9
10	8.5	6	38	3.5	10	189-10
12	9	6	38	3.5	10	189-12
15	12	9	47	6	14.5	189-15

294

CONCEALED HINGE



LH/RH



- For small panels having a 10mm internal bend. Designed to maximize space available. copper plated for easy welding

APPLICATIONS

Electric panels, machinery covers.

MATERIAL

BODY : Zamak DIN-EN 1774-ZnAl4Cu1

WELDING PART : Steel

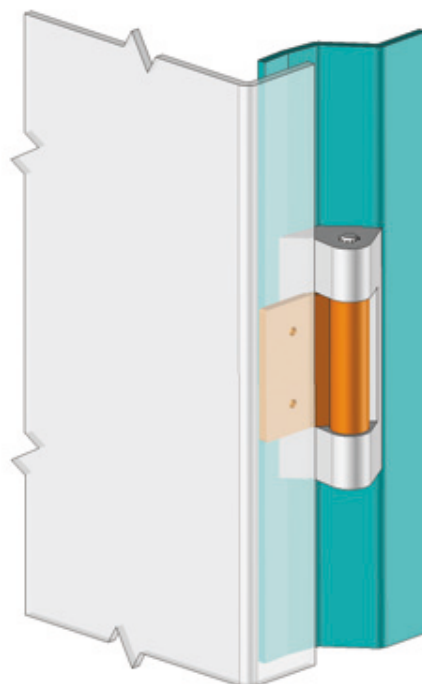
Pin : Steel

FINISH

BODY: Zinc Plated

WELDING PART : Copper plated

! Note: Bolts are nuts given



Hinge Rotation Angle

